



**solar**smartbench

**SOLAR POWERED OUTDOOR BENCH**

# solar smartbench

**Solar Smart Bench is a versatile outdoor bench that offers USB mobile device charging from utilising solar energy without external electrical connection.**

The simple design of the bench allows solar energy to be collected and stored in the integrated controlled battery system to be used as and when required. The stored energy also powers LED concealed lighting on the bench and can be utilised for Wi-Fi and other reporting.

From base model to bespoke branding, the Solar Smart Bench offers flexibility in three build finish options.



## Urban Smart Bench

The Urban Smart Bench offers a high-end, robust steel frame, powder coated in anthracite grey, with options for composite clad wood effect end panels, with a toughened edge protected 13 mm glass top.

The Solar Smart Bench has four USB charging ports, (iPhone and Android), and with an LED underside strip light included, the Urban Smart Bench offers an overall durable understated stylish outdoor bench that fits with any exterior setting.



## Flexi Smart Bench

The Flexi Smart Bench offers the same features as the Urban Smart Bench but has the extra flexibility of creating bespoke brand features at customer request, allowing the bench to have the customers unique brand identity.

Underside panels can be powder coated in brand colours, brand identity can be added to underside panels.



## Digi Smart Bench

The Digi Smart Bench offers the same features as the Urban/Flexi model but with the added premium features of LED full colour branded graphic end caps. This allows the customer to maximise their in brand communication potential.



# solar**smart**bench

## SPECIFICATIONS

### Features

- Solar Power autonomy
- Mobile Device charging
- Temperature controlled ventilated seating
- Vandal Resistant
- Quality build materials
- Easy install and mobility

### Specification

- 13mm Toughened laminated glass top
- 95 Ahr Varta battery system with regulated 1 0A inverter
- 100Wp Monocrystalline generating solar panel • 4 x 1 A/2A USB water proof ports
- Composite wood effect end panels

### Dimensions

- Length 1680mm
- Width 700mm
- Height 452mm

### Customisation

- Ambient LED Lighting
- Themed / branded ends
- Signage / Advertising
- Wi-Fi
- Data gathering
- RAL colour options

SolarRange\_DAY\_01-1.jpg

StellarBench\_DUSK\_01.jpg

### Solar Bench - Electrical Specification

Monocrystalline Panel - 100Wp output

Battery -Varta LFD90, 90Ahr gel battery

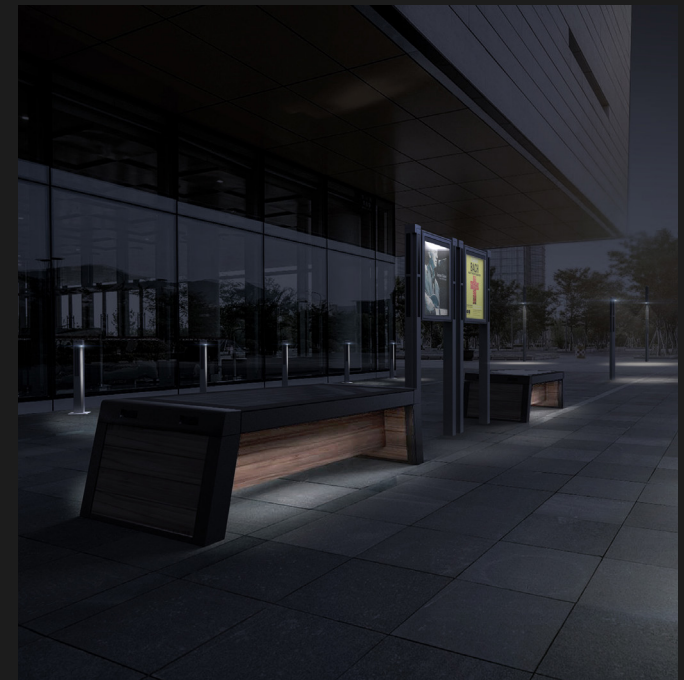
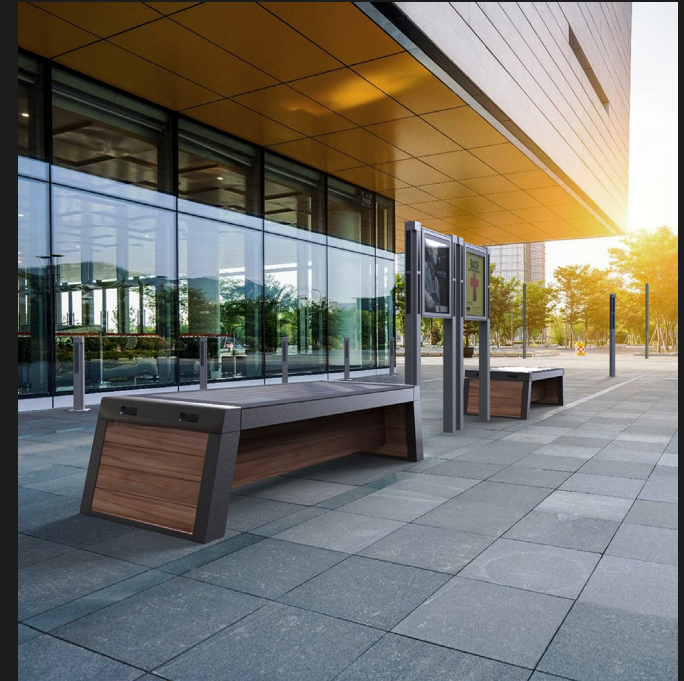
MPPT charger - 10 A

Connectors - USB 2.0 - 4 off

*Context:*

An iPhone X has a 2.7 Ah battery so our battery can charge over 30 iPhone X's without any solar panel input.

Our panel has the capability to charge 4 iPhone X's with less than 50% of its full output. The rest of the charge goes to storage in the battery



the**solar**range

INTELLIGENT SOLAR LIGHTING

Further details about our unique range of products are available from our website  
[www.solar-range.com](http://www.solar-range.com)

Leasing packages are available through our financial services partner and we would be pleased to provide further information on request

[www.solar-range.com](http://www.solar-range.com)  
[sales@solar-range.com](mailto:sales@solar-range.com)  
0044 1392 247577

the**solar**range is produced by **onthe**case****