



IDENTITY  
DESIGN  
SIGNS  
SOLUTIONS

# MODULAR TEXTILE LED LIGHTBOX SYSTEM

Illuminated Textile Lightbox Solutions

This simple and adaptable lightbox system uses dye-sublimated graphics on a fabric that stretches over the frame with 100% of the textile material remaining visible.

The grooved frame perfectly fits the textile print, which has a rubber lip that stretches in place. This makes for fast replacement without tools, even by non-specialists.

Available as:

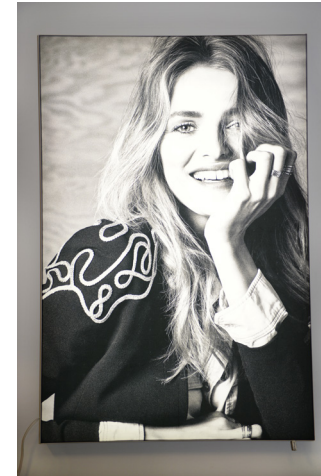
- Free-Standing
- Wall-Mounted
- Suspended



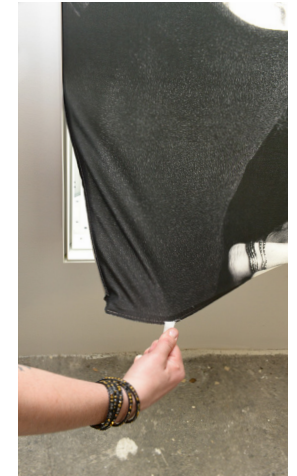
SIMPLE ASSEMBLY WITHOUT  
SPECIAL TOOLS



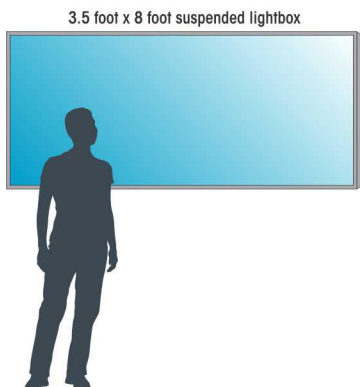
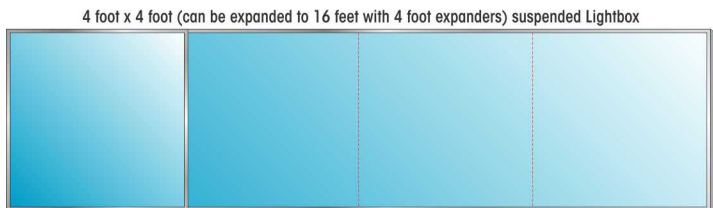
PRESS RUBBER LIP OF  
TEXTILE PRINT INTO  
GUIDE GROOVE



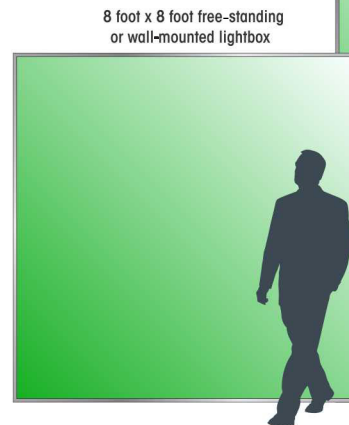
ASSEMBLED FRAME



IDEAL FOR FAST  
REPLACEMENT OF DESIGNS



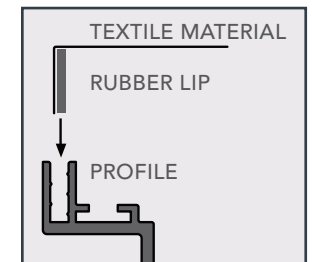
4 foot x 8 foot free-standing  
or wall-mounted lightbox



8 foot x 8 foot free-standing  
or wall-mounted lightbox



4 foot x 12 foot wall-  
mounted lightbox



INCREDIBLY EASY TO INSERT  
AND REPLACE DESIGNS

ILLUMINATION  
PROVIDED BY **bitro**



IDENTITY  
DESIGN  
SIGNS  
SOLUTIONS

## MODULAR TEXTILE LED LIGHTBOX SYSTEM

Illuminated Textile Lightbox Solutions

### FEATURES

- Custom sizes available
- Visually frameless effect
- Adaptable for ceiling panels, column cladding or suspended effect
- Fabric faces can be easily changed in minutes due to the ingenious edge-mounting system
- Flexibility allows for marketing campaigns to be introduced easily, with minimum overhead
- The 12v LED illumination gives cost-effective bright illumination at low cost.
- 50,000 hours of LED life means little or no annual service costs
- Requires no technical skills or tools to update
- Available single sided in wall-mounted, suspended and free-standing
- Available double-sided in suspended
- Customizable frame colors. White is standard. Can also be made with continuation of a print on sides
- Durable powder-coated frames resist damage
- Modular system means that units can be joined to make larger sizes; ships in modular sizes
- Print management available from IDS. We ensure distribution of materials to the right place at the right time
- Dye-sublimated graphics give rich, attractive image quality with incredible detail
- Interior and protected exterior options available

